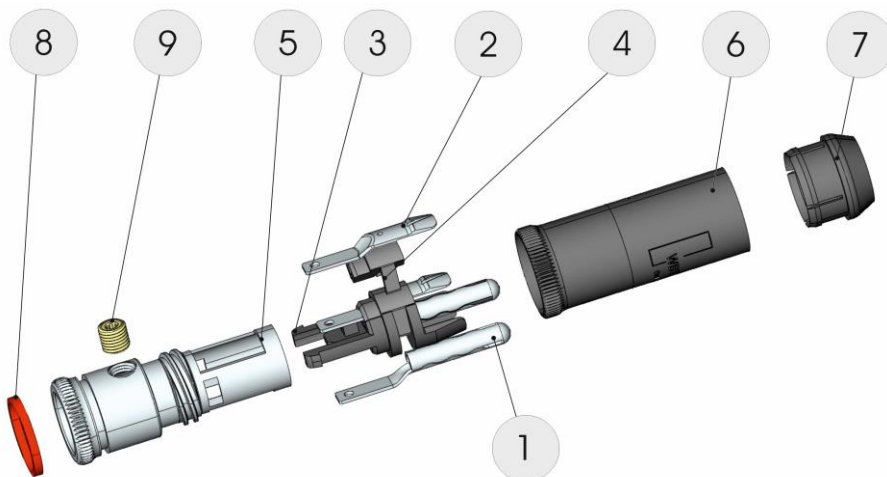


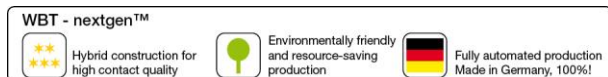
All dimensions in mm

**Component list**

1	Signal Conductor 'Plus', fine silver	1
2	Signal Conductor 'Minus', fine silver	1
3	Dielectric 'Plus', PA	1
4	Dielectric 'Minus', LCP	1
5	Holding Unit, brass	1
6	Shaft of Clamping Barrel, brass	1
7	Head of Clamping Barrel, brass	1
8	Marking Ring, Desmopan ¹⁾	1
9	Torx ²⁾ Screw M4x4, brass	1

Extent of delivery 1 – 9 assembled

Revision date 08.07.2024

¹⁾Desmopan® is a trademark of Bayer AG • ²⁾Torx® is a registered trademark of Camcar Textron • WBT and nextgen™ are registered trademarks of WBT-Industrie GmbH**WBT-0102 Ag nextgen™ RCA Plug**

(Internat. Pat. EP 0 460 145 B1)

RCA wideband plug for analog and digital connections

1. Mechanics

- single-element low-tolerance contact elements (Tol. $< \pm 0.02$ mm)
- central contact unit consisting of two moulded contact holders (1), (3) and (2), (4)
- the brazen Holding Unit (5) grips the central contact unit and also provides the cable strain relief thanks to the Grub Screw (9) (Torx²⁾ T.6)
- the brazen Clamping Barrel (6), (7) is axially screwed over the thread of the holder and provides a permanent tight contact pressure. This way, the plug can be adopted perfectly by every type of RCA socket
- EMC shielding is effectively achieved by the Clamping Barrel (6), (7) and the Holding Unit (5)

2. Materials

- Signal conductors (1), (2) fine silver
- Dielectric 'Plus' (3) PA, glass fibre reinforced
- Dielectric 'Minus' (4) LCP
- Grub Screw (9) brass
- Holding Unit (5) brass
- Clamping Barrel (6), (7) brass, chromium-plated
- Marking Ring (8) Desmopan 192¹⁾, coloured versions available according to the EIA/CEA norm for multi channel systems

3. Surfaces

- Signal Conductor (1), (2) fine silver, pure
- Clamping Barrel, (6), (7) chromium-plated, two-layer coating
- Holding Unit (5) nickel-free platinized

4. Operating Characteristics (reliably observed after more than 10^3 connections/disconnections)

- Permanent current $I_D > 10$ A
- Transition resistance $R_0 < 0.1$ mOhm
- Contact resistance $R_{Bi}, R_{Ba} < 0.45$ mOhm (patch resistance, inner/outer)
- Self capacitance $C \approx 2.82$ pF
- Insulation resistance $R_{ia}, R_{ag} > 1.3 \cdot 10^9$ Ohm (conductor/conductor, conductor/chassis)
- Characteristic impedance $Z = 75$ Ohm up to 200 MHz

5. Dimensions

- Outer / inner diameter 13.6 / 9.2 mm
- Total length 51 mm

6. Mounting

- Connection soldering, crimping (2.8 mm flat push-on cable shoe)
- Cables for cables up to 9 mm dia.

Warning: The use of contacting agents and cleaners containing solvents can lead to damage to the plastic components.



RoHS compliant

Characteristic Impedance 75 Ω up to 200 MHz

(for well shielded analog and digital wide band connections)