

SATS/SATM

Supreme Attenuator (L-pad circuit)

SATS / Stereo



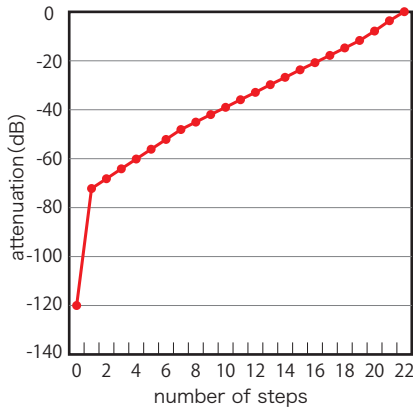
SATS / backside

SATM / Mono

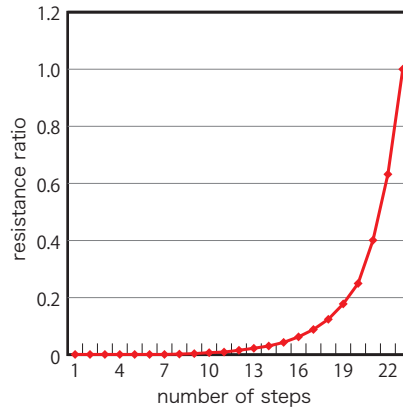


- L-pad circuit attenuator used AMRG skeleton resistors for audio made by Amtrans
- Long term reliability and stability based on New Rotary Switch made by Amtrans
- Pure straight with pleasant and clear sound
- Many steps and smooth control in lower level
- Smallest gang error $\pm 0.08\text{dB}$ stabilized panoramic position in lower level
- Nominal Total resistance : 10K Ω /50K Ω /100K Ω Order made:30K Ω

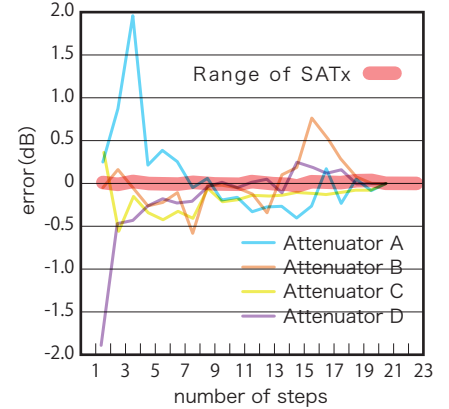
Attenuation Curve



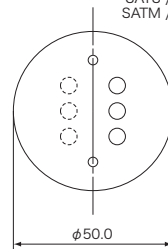
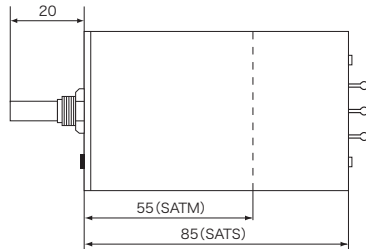
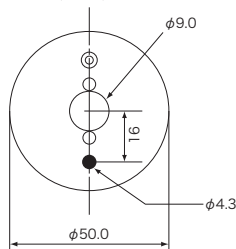
Resistance Taper



Comparison of Gang Error Range SATx and other Attenuators

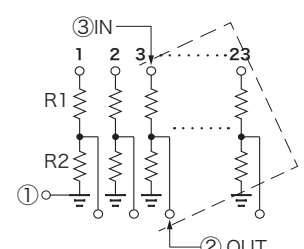


Dimension (mm)



SATS / 6 Terminals
SATM / 3 Terminals

L-pad circuit



Specification	Type	Nominal Total Resistance	Circuit Method	Rated Power	Maximum Operating Voltage	Contact Resistance	Durability
	SATS (Stereo)	10K Ω 50K Ω 100K Ω Order made : 30K Ω	L-pad circuit 23 positions 4 poles \times 4 circuits (Stereo)	0.75W	350VDC	Below 20m Ω at DC6V 0.1A	10,000 rotation at No-load 15~20 rotation a min.
SATM (Mono)		2 poles \times 2 circuits (Mono)					